

# SONOACE X4

THE SUMMIT OF EVOLUTION

SONOACE X4  
THE SUMMIT OF EVOLUTION

[www.medison.com](http://www.medison.com) | [info@medison.com](mailto:info@medison.com)

see it all   
MEDISON

CT-MD-X4-1061-08.01.2006

Some equipment and software mentioned or shown in this brochure may be optional in certain markets. Medison reserves the right to make changes without notice. Government approval pending in some markets. All trademarks are property of their respective owners.

see it all   
MEDISON

the summit of evolution.

**It's the summit of evolution, X4 premium Doppler system**

Premium class ultrasound performance is no longer just for color systems, introducing the newest entry into the premium class, SONOACE X4 - full featured, premium class black & white ultrasound system from Medison. The most complete and feature packed black & white ultrasound system we've ever created to meet the ever increasing diagnostic needs of healthcare professionals.

Continuing the legacy of our SONOACE series, the all new SONOACE X4 is headlined by premium performance, premium ergonomics and premium workflow in one comprehensive and compact unit, making it an ideal solution for broad range of clinical settings and application areas.

SONOACE X4



# premium performance



The new premium class spectral Doppler ultrasound system, SONOACE X4 is the culmination of a variety of advanced technologies. In particular, spectral Doppler than enables fast and accurate measurement of blood flow, is a truly innovative function found in no other systems of the same class and it also provides more accurate diagnostics for various applications.

## PREMIUM SPECTRAL DOPPLER PERFORMANCE

- Higher sensitivity PW Doppler
- Accurate PW spectrum
- Multi-frequency PW Doppler
- HPRF



SONOACE X4 is applied with technical breakthroughs from Medison that propelled the quality of 2D images to a higher level. Full Spectrum Imaging expands individual ultrasound range into broadband range through special algorithm, and thus provides high quality images from near-zone to far-zone. In addition, Synthetic Aperture further improves the scope of diagnostics for patients, while THI ensures high resolution by eliminating artifacts and clutters from the images. Extreme High Dynamic Range makes it easier to discriminate tissues via high quality contrast resolution and Post Gain Control enables the optimization of images after post-exam. These are some of the examples of premium class technologies embedded into the system.



**PREMIUM 2D PERFORMANCE** Full Spectrum Imaging | Synthetic Aperture | Tissue Harmonic Imaging (THI) | Extreme High Dynamic Range (150dB)

**SPECIAL PERFORMANCE** Freehand 3D | 3D Multi planar imaging | Quick Scan | Post Gain Control | High resolution Zoom

**APPLICATION AREA** Internal medicine : carotid vessels, abdominal, cardiovascular | OB/GYN : obstetrics, gynecology, breast | Pediatric : neonatal cephalic, abdominal, small parts, intussusception | Radiology : abdominal, small parts, breast, musculoskeletal | Urology : prostate, urinary tract, renal



## premium ergonomics

The premium ergonomics of SONOACE X4 is a result of innovation and ardent idea generation that far exceeds the simple concept of ultrasound diagnostics equipments. Ultra-light, compact X4 has 4 swivel wheels as well as front and back-end handles to ensure mobility anywhere and anytime in order to support fast diagnostics. On top of that, the silent fan of X4 that remarkably reduced noise makes the diagnostics environment far more comfortable and relaxing. Elegant and fashionable design of X4 with round patterns continuously provides a new set of standards for the next generation diagnostic equipments.

**PORTABILITY** Compact and slim design with light weight |  
Four wheel swivels | Front and rear handles | Integrated storage shelves  
**USER-FRIENDLY INTERFACE** Silent fan operation | Quick scan |  
Intelligent grouping key | 4 stable probe holders



SONOACE X4 not only incorporates the premium class technology, functionality and innovative ergonomics design, but also takes a leading role in creating a more advanced diagnostics environment by maximizing the efficiency of workflow and productivity.

While Sonoview Lite that improves the efficiency of data management comes as default, diagnostics images can be effectively shared through DICOM compatibility of the system. Also, CD R/W drive and 4 USB ports are highly useful for data storage and for interfacing with various devices.

Furthermore, a variety of diagnostics probes can be attached to SONOACE X4 to create a far more effective and advanced diagnostics system compared against existing B/W systems.

**DATA MANAGEMENT** Sonoview Lite | CD R/W drive | DICOM | 4 USB ports | Flash memory

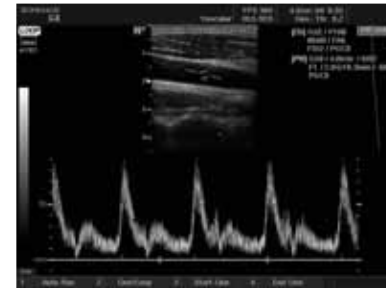
**VERSATILE TRANSDUCERS** Convex probe : C3-7ED, C2-5ET, C4-9ED | Endocavity probe : EC4-9ES, EC4-9ED |

Linear probe : HL5-9ED, L5-9EC, L5-9EE | Microconvex probe : C2-4ES

## premium workflow



**X4, the latest addition to SONOACE series provides unparalleled quality and value**  
 SONOACE X4, the newest member of the SONOACE family of products that is designed to provide ultimate combination of diagnostic confidence and precision.



Common carotid artery in PW Doppler



Kidney in 2D



Parasternal long axis view in 2D



Transmittal inflow in PW Doppler



Fetal heart in 2D



Fetal head in 2D